

DISCHARGE NOZZLE 360° FEDRxxxxx

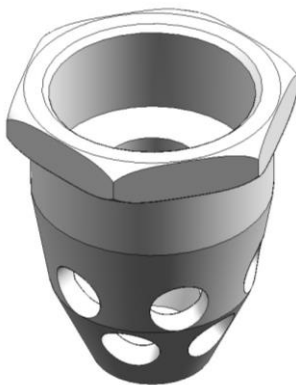
Description

Its function is to discharge extinguishing agent inside the hazard area as homogeneously as possible to achieve efficient extinguishing.

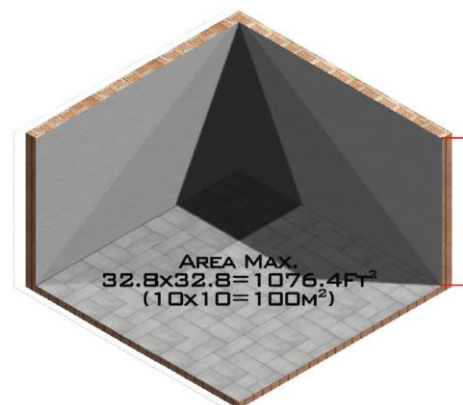
They are screwed onto the discharge piping in a vertical position, with threads from 3/8" BSP to 2 1/2" BSP. The 360° nozzles have 8 outlet orifices at two levels. Each level has a different angle of discharge to improve gas distribution in the hazard area.

The 360° radial nozzles discharge gas uniformly in a 360° circular section plane. The 360° nozzles are installed in the middle of the protected room.

These discharge nozzles have a limitation of maximum coverage area of 32.8 x 32.8 ft (10 x 10 m), a limitation of maximum height of 23.3 ft (7.1 m) to 122 psi (8.4 bar) and a limitation of maximum height of 16.4 ft (5 m) to 61 psi (4.2 bar).



Nozzle 360°



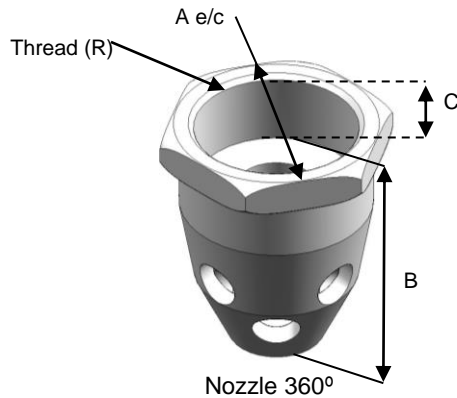
HEIGHT MAX.
23.3 FT AT 123 PSI
(7.1 M AT 8.5BAR)

HEIGHT MAX.
16.4 AT 61 PSI
(5 M AT 4.2 BAR)

Technical information

Discharge nozzle 360° FEDRxxxxx	
Material	Carbonated steel / Inox Steel AISI 303 and 316 / Aluminum * / Brass
Inlet and Outlet Finish	Zinc-niquel (Only the manufactured in carbonated steel)
Thread connection to the pipe (Female thread)	From 3/8" BSP to 2 1/2" BSP
Nozzle 360°	8 orifices at 2 levels
The threads connections comply with the International standards ISO 7-1 or ISO 228-1	YES
Approvals	UL-EX15547 FM-3062401

* This is not part of the FM approval, only UL Listed.



NOZZLES 360° - CARBONATED STEEL with anticorrosive treatment ¹						
MODEL	Thread connection (R)	No. of orifices	Orifices Ø In (mm)	Length Ex. A e/c In (mm)	Length B In (mm)	Length C In (mm)
FEDR10	3/8" BSP	8	0.16 (4)	0.94 (24)	1.4 (35.5)	0.55 (14)
FEDR15	1/2" BSP	8	0.22 (5.5)	1.18 (30)	1.66 (42.1)	0.63 (16)
FEDR20	3/4" BSP	8	0.3 (7.5)	1.57 (40)	2.13 (54)	0.71 (18)
FEDR25	1" BSP	8	0.35 (9)	1.81 (46)	2.32 (59)	0.75 (19)
FEDR32	1 1/4" BSP	8	0.45 (11.5)	2.17 (55)	2.64 (67)	0.83 (21)
FEDR40	1 1/2" BSP	8	0.55 (14)	2.36 (60)	2.87(73)	0.87 (22)
FEDR50	2" BSP	8	0.71 (18)	2.83 (72)	3.43(87)	1.06 (27)
FEDR65	2 1/2" BSP	8	0.71 (18)	3.35 (85)	3.54(90)	1.18 (30)

1- If you want high anti-corrosive coating add "CHN" to the nozzle code.

NOZZLES 360° - ALUMINUM* 2						
MODEL	Thread connection (R)	No. of orifices	Orifices Ø In (mm)	Length Ex. A e/c In (mm)	Length B In (mm)	Length C In (mm)
FEDR10A	3/8" BSP	8	0.16 (4)	0.94 (24)	1.4 (35.5)	0.55 (14)
FEDR15A	1/2" BSP	8	0.22 (5.5)	1.18 (30)	1.66 (42.1)	0.63 (16)
FEDR20A	3/4" BSP	8	0.3 (7.5)	1.57 (40)	2.13 (54)	0.71 (18)
FEDR25A	1" BSP	8	0.35 (9)	1.81 (46)	2.32 (59)	0.75 (19)
FEDR32A	1 1/4" BSP	8	0.45 (11.5)	2.17 (55)	2.64 (67)	0.83 (21)
FEDR40A	1 1/2" BSP	8	0.55 (14)	2.36 (60)	2.87(73)	0.87 (22)
FEDR50A	2" BSP	8	0.71 (18)	2.83 (72)	3.43(87)	1.06 (27)
FEDR65A	2 1/2" BSP	8	0.71 (18)	3.35 (85)	3.54(90)	1.18 (30)

2- If you want hard anodized coating add "AHA" to the nozzle code.

* This is not part of the FM approval, only UL Listed.

Note: In option exists the same aluminium nozzle but with a hard anodized coating in order to be installed in highly corrosive environments. If this option is desired, put an HA after the code when order it (FEDRxxAHA).

NOZZLES 360° - BRASS

MODEL	Thread connection (R)	No. of orifices	Orifices Ø In (mm)	Length Ex. A e/c In (mm)	Length B In (mm)	Length C In (mm)
FEDR10B	3/8" BSP	8	0.16 (4)	0.94 (24)	1.4 (35.5)	0.55 (14)
FEDR15B	1/2" BSP	8	0.22 (5.5)	1.18 (30)	1.66 (42.1)	0.63 (16)
FEDR20B	3/4" BSP	8	0.3 (7.5)	1.57 (40)	2.13 (54)	0.71 (18)
FEDR25B	1" BSP	8	0.35 (9)	1.81 (46)	2.32 (59)	0.75 (19)
FEDR32B	1 1/4" BSP	8	0.45 (11.5)	2.17 (55)	2.64 (67)	0.83 (21)
FEDR40B	1 1/2" BSP	8	0.55 (14)	2.36 (60)	2.87(73)	0.87 (22)
FEDR50B	2" BSP	8	0.71 (18)	2.83 (72)	3.43(87)	1.06 (27)
FEDR65B	2 1/2" BSP	8	0.71 (18)	3.35 (85)	3.54(90)	1.18 (30)

NOZZLES 360° - INOX STEEL AISI 303

MODEL	Thread connection (R)	No. of orifices	Orifices Ø In (mm)	Length Ex. A e/c In (mm)	Length B In (mm)	Length C In (mm)
FEDR10I	3/8" BSP	8	0.16 (4)	0.94 (24)	1.4 (35.5)	0.55 (14)
FEDR15I	1/2" BSP	8	0.22 (5.5)	1.18 (30)	1.66 (42.1)	0.63 (16)
FEDR20I	3/4" BSP	8	0.3 (7.5)	1.57 (40)	2.13 (54)	0.71 (18)
FEDR25I	1" BSP	8	0.35 (9)	1.81 (46)	2.32 (59)	0.75 (19)
FEDR32I	1 1/4" BSP	8	0.45 (11.5)	2.17 (55)	2.64 (67)	0.83 (21)
FEDR40I	1 1/2" BSP	8	0.55 (14)	2.36 (60)	2.87(73)	0.87 (22)
FEDR50I	2" BSP	8	0.71 (18)	2.83 (72)	3.43(87)	1.06 (27)
FEDR65I	2 1/2" BSP	8	0.71 (18)	3.35 (85)	3.54(90)	1.18 (30)

NOZZLES 360° - INOX STEEL AISI 316

MODEL	Thread connection (R)	No. of orifices	Orifices Ø In (mm)	Length Ex. A e/c In (mm)	Length B In (mm)	Length C In (mm)
FEDR10I316	3/8" BSP	8	0.16 (4)	0.94 (24)	1.4 (35.5)	0.55 (14)
FEDR15I316	1/2" BSP	8	0.22 (5.5)	1.18 (30)	1.66 (42.1)	0.63 (16)
FEDR20I316	3/4" BSP	8	0.3 (7.5)	1.57 (40)	2.13 (54)	0.71 (18)
FEDR25I316	1" BSP	8	0.35 (9)	1.81 (46)	2.32 (59)	0.75 (19)
FEDR32I316	1 1/4" BSP	8	0.45 (11.5)	2.17 (55)	2.64 (67)	0.83 (21)
FEDR40I316	1 1/2" BSP	8	0.55 (14)	2.36 (60)	2.87(73)	0.87 (22)
FEDR50I316	2" BSP	8	0.71 (18)	2.83 (72)	3.43(87)	1.06 (27)
FEDR65I316	2 1/2" BSP	8	0.71 (18)	3.35 (85)	3.54(90)	1.18 (30)

WARNING: This type of Discharge nozzle 360° FEDRxx is manufactured and approved to be used in fixed extinguishing installations with FK-5-1-12. This product is not designed for other use or purpose. If product user has any doubt regarding the application or product use, please contact +34 947 28 11 08. Every not approved use or application or / and any other not approved modification of the product or its function may cause serious accidents or / and personal damages. SIEX 2001 S.L. is not responsible for any non-approved use of the application.

IMPORTANT: SIEX 2001 S.L. reserves the right to change or modify without previous notice any data or specification due to changes or modification in order to improve the products presented.