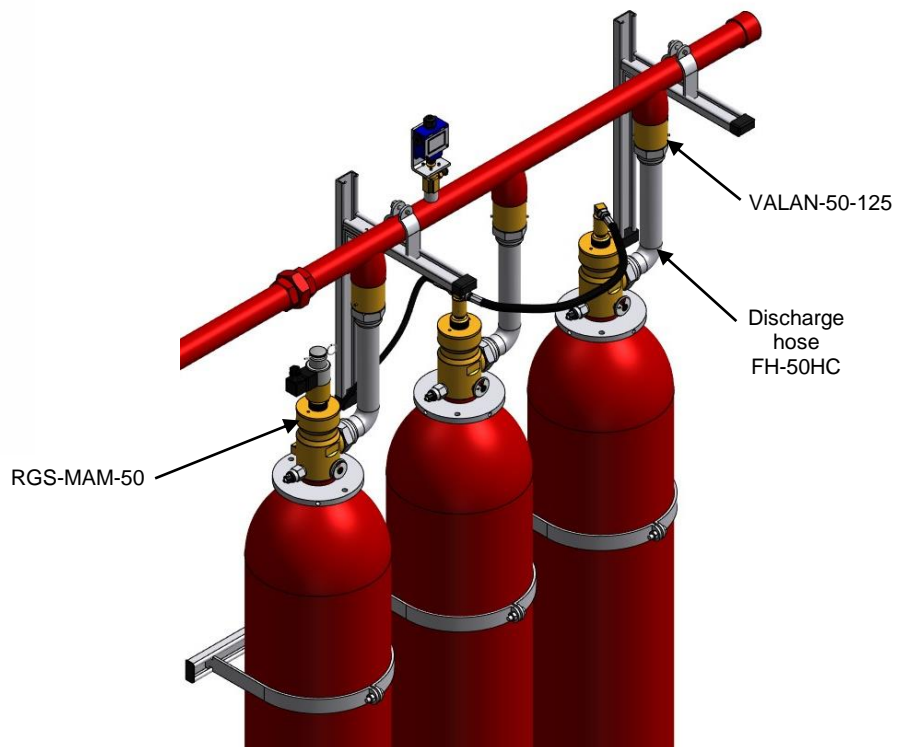
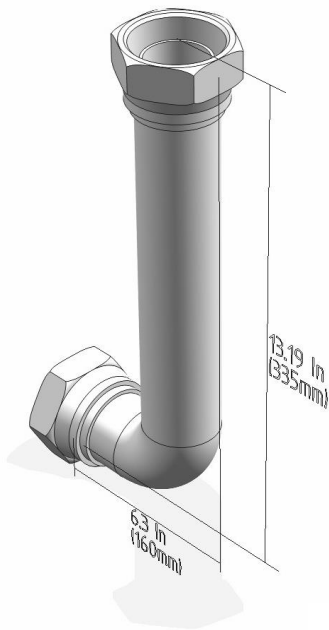


## DISCHARGE HOSE FH-50HC

### Description

Discharge hose FH-50HC for FK-5-1-12 systems is used to connect cylinders to the discharge manifolds in cylinder battery systems, or to connect the cylinders to the discharge pipe in modular systems.

This allows disconnecting the containers for maintenance or refill avoiding disassembling of other components as fittings, pipes, etc.



### Technical information

Discharge hose FH-50HC	
Rigid conduct	Steel
Connection thread to the container valve (RGS-MAM-50)	2" BSP F revolving
Connection thread to the check valve (VALAN-50-125)	2" BSP F revolving
Inclination angle	90°
Approvals	UL-EX15547 FM-3062401

WARNING: This type of Discharge hose FH-50HC is manufactured and approved to be used in fixed extinguishing installations with FK-5-1-12. This product is not designed for other use or purpose. If product user has any doubt regarding the application or product use, please contact +34 947 28 11 08. Every not approved use or application or / and any other not approved modification of the product or its function may cause serious accidents or / and personal damages. SIEX 2001 S.L. is not responsible for any non-approved use of the application.

IMPORTANT: SIEX 2001 S.L. reserves the right to change or modify without previous notice any data or specification due to changes or modification in order to improve the products presented.